

# Meias Marias



## Beach Backpack



With adjustable straps & two pockets

## You'll Need:

- Sewing machine, matching threads, pins, cutting material, soft pencil or a water marker pen, iron board and iron;
- Terry cloth;
- 1,5m cotton cord ;
- 1m strap webbing with 2cm width in a coordinated color;
- 2 strap adjusters e 1 round closing;

## Preparing Your Work

Read the tutorial carefully before you start to familiarize yourself with the steps you'll follow and anticipate any questions you may have.

Cut the pattern pieces following the instructions contained in each piece of the pattern. The pattern comes in real size and includes a seam allowance of 1 cm, which lets you use your regular feet as a guide. Cut pieces of the same size of the pattern.

The backpack is presented with one outside pocket and one inside pocket.

Before you start make sure you have all the pieces cut and have all the materials needed for the confection of the backpack.

Because this is a backpack made with Terry cloth, all seams should be made with Zig-Zag stitch and thread tension should be slightly below normal, to allow enough elasticity to your stitch so it will go with the fabric. The stitch width must be set to the higher point to involve the maximum amount of fabric and give the seams extra strength. For the distance between stitches or the length of the stitch you will need to use two configurations, one with the distance set to the lowest to make an almost continuous stitch and the other configuration set as a low length stitch making stitches near but not together. In the tutorial you will find photos of the seams so you can identify which settings you should use at all times.

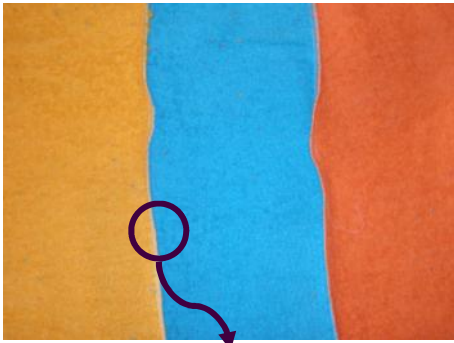
Have fun!

Subscribe my newsletter using the link:

<http://eepurl.com/nneY1>

# MOCHILA DE PRAIA

- 1 -



Cut a piece of terry cloth with 1m wide and 45cm long. This piece is the body of the bag.

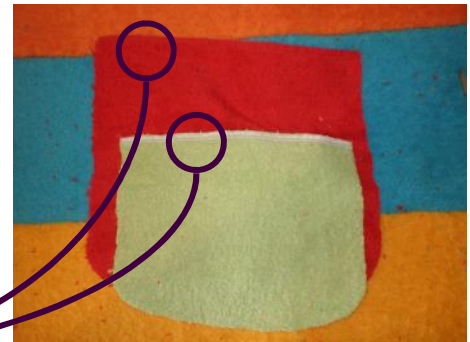
You can choose to make the whole bag in one color or stripe it like this one. To do this you have to cut so many stripes as you want, make the size of each compatible with the final measures of 45 cm, and then add 1cm of seam allowance to each side of each stripe.



Stitch the stripes to each other using a zig-zag stitch set as shown in the preparing your work section, in this seam you'll adjust the stitch length to a lower setting, but not the lowest of all, in order to obtain a seam similar to the one in the picture.

- 2 -

Apply a Zig-Zag stitch to the top of each pocket using the picture above as a reference for setting your stitch length. You may want to try first on a scrap of fabric until you get the right length.



- 3 -



Get the backpack body piece ready and holding the two lateral margins pin baste from top to bottom.

Mark the middle points and align the exterior pocket, on the outside of the bag, so that it is centered.

Pin baste the pocket to the backpack body.

Sew the pocket on the outside of the bag using the same stitch regulation, so that the pocket is properly applied to the body.

- 4 -

Reset the machine settings as described in the Preparing your work section and stitch the longitudinal seam of the body part, to form a tube. Don't forget right sides are meant to be together.

- 5 -

Turn it to the wrong side and center the inside pocket over the longitudinal seam and pin baste it.

Press the existing seams in the same direction.

Sew the inside pocket using the same stitch regulation used to sew the outside pocket.



- 6 -



Cut two strips of terry cloth with 12cm by 32cm.

Fold in half lengthwise and pin baste it.

Using the initial stitch settings, stitch each strap along its length.

Turn to the right side.

At one end of each strap, make a fold of about 2 cm, inward.



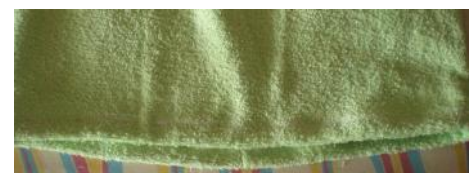
Cut two strips of strap webbing with 35cm each. Introduce a strip on each strap on the folded edge, and make sure you have 3-4 cm inside the strap.

Make a cross seam to close this end of the straps.

- 7 -

For the backpack mouth cut a strip of terry cloth 1m long and 20cm wide.

Close the seam with the initial zig-zag stitch.



# - 8 -



At one side apply a zig-zag stitch to overcast.

With the iron press a 2cm fold all around the strip and pin baste it.

Sew the fold at the inner edge using the initial zig-zag stitch and leave an opening for inserting the cord, centered with the front or the back of the backpack.



Overlap the backpack mouth on the body piece, right sides together and pin baste it.

# - 10



Insert the straps from the right side and align them through the center of the back piece of the backpack, leaving 3cm apart each other.

Baste the straps to hold in place when sewing and sew the mouth to the body of the backpack, making a double seam as shown in the picture.



# - 9 -



This is what you should have on the right side.

# - 11 -



Cut two strips of webbing 15 cm long and introduce in each a strap adjuster as showed in the picture.

Apply a zig-zag stitch in the closed end of each stripe to prevent from fraying.

# - 12 -

Pin baste each strap adjuster on the bottom piece of the backpack, leaving 5 cm from each corner.



# - 13

Mark the center points of the bottom piece and align each one with the backpack body piece, overlapping both parts with right sides together.

Pin baste and sew with double stitching for extra bottom strength.



# - 14

The backpack is almost ready! Insert the strap webbing in the strap adjuster and make it fit your needs!



# - 15 -



With the help of a safety pin introduce the cotton cord in the mouth of the bag using the opening.

After being fully inserted, insert the round closing on the cord, cut the extra ends and secure with two nodes at each end of the cord.

The backpack is ready!



# BACKPACK PATTERN

Bottom Piece

Cut 1x



# Outside Pocket Cut 1x



# Inside Pocket Cut 1x